

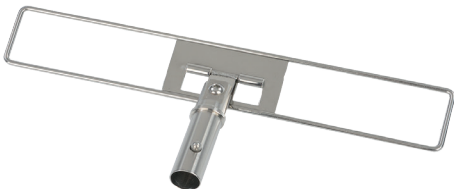
VertiKlean and VertiKlean MAX Mop Frames

QuickConnect stainless steel frames

The autoclavable frames for Contec’s VertiKlean and VertiKlean MAX mop heads are lightweight, durable and are made of stainless steel providing excellent chemical compatibility.

The frames easily attach to both the VertiKlean and VertiKlean MAX mopping systems. Note that the frames 2651KLF and 2652K, that feature keepers to affix wipes around the mop, are not compatible with the original T-slot VertiKlean mops or the hands free mop removal tool with select bucket systems. The mop frames are compatible with all Contec QuickConnect telescoping and fixed length handles.

All of the mop frames listed may be autoclaved (recommended cycle 121°C for 30 minutes).



2652SS

Features	Benefits
Available in several sizes	<ul style="list-style-type: none">• Versatile selection for different environments within a cleanroom
Stainless steel frames	<ul style="list-style-type: none">• Durable and highly polished• Compatible with a wide range of disinfectants and solutions
Several frames can be used with hands free removal tool	<ul style="list-style-type: none">• Prevents cross-contamination by eliminating the need to touch used mop heads



2652K



2652LF



2651LF



2651KLF

Part No.	Description	Size	Packaging	Weight
2651LF	QuickConnect Lay Flat Mop Frame Stainless steel mop frame for Regular VertiKlean MAX Mop Heads	18 cm	1/case	0.22 kg
2651KLF	QuickConnect Lay Flat Mop Frame Stainless steel mop frame for Regular VertiKlean MAX Mop Wipe System	19 x 4.7 x 11 cm	1/case	0.27 kg
2652SS	QuickConnect Mop Frame Stainless steel mop frame for Medium & Large VertiKlean MAX Mop Heads	29 cm	1/case	0.19 kg
2652K	QuickConnect Mop Frame Stainless steel mop frame for VertiKlean MAX Mop Wipe System	29 x 4.7 x 11 cm	1/case	0.25 kg
2652LF	QuickConnect Lay Flat Mop Frame Stainless steel mop frame for Medium & Large VertiKlean MAX Mop Heads	29 cm	1/case	0.24 kg

Part numbers 2651LF, 2652LF, and 2652SS can be used with the hands-free removal tool on the Compact Bucket System.

Product Information

Material	Type 304 stainless steel Silicone rubber
----------	---

Packaging

Packaging Materials	
Case	Corrugated fibreboard (PAP)

Recycle Key

PET	
LDPE	
PAP	

For more information or to request a sample,
email infoeu@contecinc.com or phone +33 (0) 2 97 43 76 98.

PDSM038_EMEA | 120126

Copyright © 2026 Contec, Inc. All rights reserved.

Contact us:
infoeu@contecinc.com
emea.contecinc.com

Vannes
France
tel: +33(0) 2 97 43 76 98

Spartanburg, SC
United States
tel: +1 (864) 503-8333

 **CONTEC**
CLEANROOM